



User Manual

M10K PRO

Windows 7 or later, macOS 10.12 or later, Android 6.0 or later

CONTENTS

Precautions	0
1. Product Overview.....	2
1.1 Tablet Introduction.....	2
1.2 Product and Accessories	2
1.3 Tablet Connection	3
1.4 Driver Installation	4
1.5 Connecting to Android Phone & Tablet.....	4
1.6 Digital Pen Overview	5
1.7 Pen Nib Replacement	6
2. Function Setting	7
2.1 Device Connection Prompt	7
2.2 Working Area Setting	8
2.3 Shortcuts Keys Function Setting.....	11
2.4 Ring/Windows Radial Function	12
2.5 Pen Buttons Function Setting.....	14
2.6 Pressure Sensitivity Setting	15
2.7 Pen Pressure Testing.....	16
2.8 Enable the Windows Ink feature	17
2.9 Mouse Mode.....	18
2.10 Data Export and Import.....	19
3. Specifications	20
4. Trouble Shooting	21
5. Contact Us for After-sale Service	21

1. Product Overview

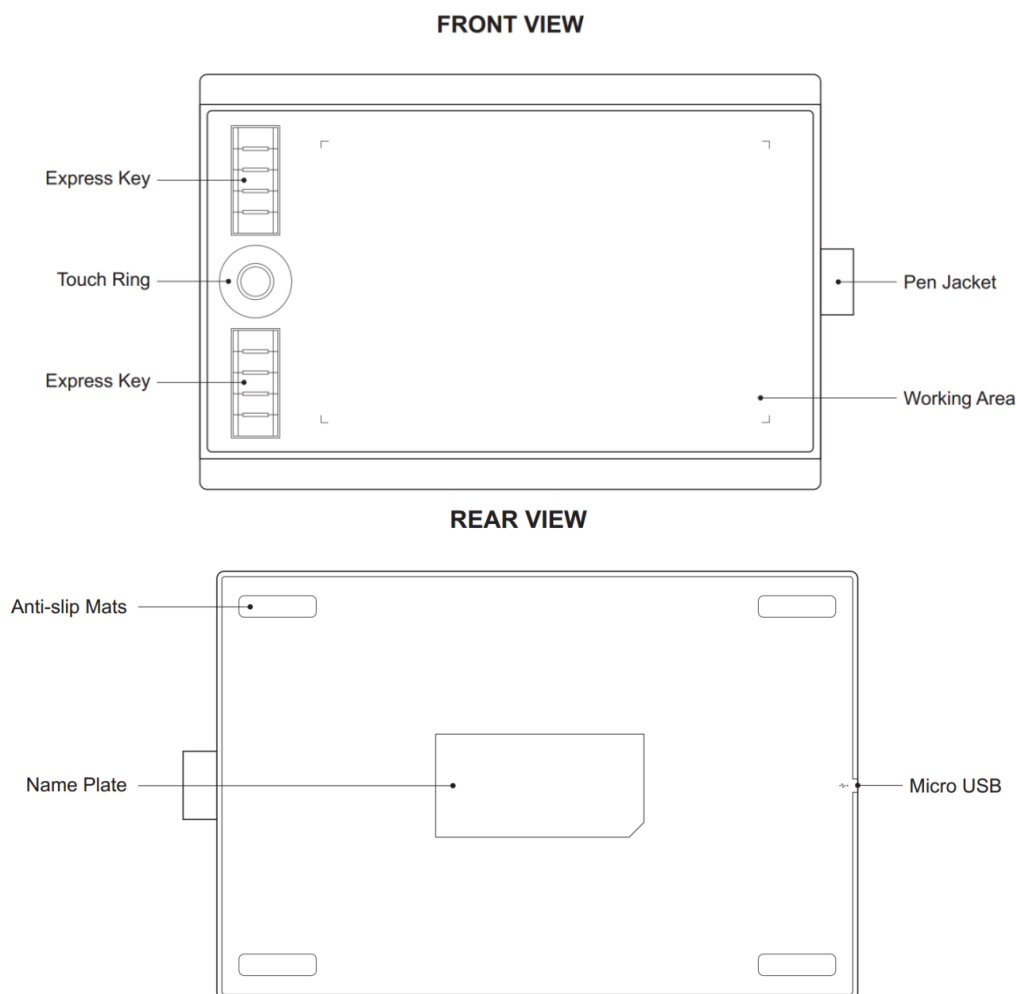
1.1 Tablet Introduction

Thanks for buying GAOMON M10K PRO Tablet. This is a new generation of professional battery-free drawing tablet, which can greatly improve your work efficiency of painting and creation, and full of fun. You can freely painting and writing, depicting different lines and colors, just as the pen writes on the paper, which brings you a real shock experience.

To give you a better understanding and using of your tablet, please read this user manual carefully. The user manual only shows the information under Windows, unless otherwise specified, this information applies to both Windows and Mac systems.

1.2 Product and Accessories

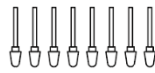
1.2.1 Graphics Tablet



1.2.2 Packing List



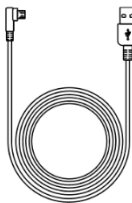
AP32 Battery-free Pen



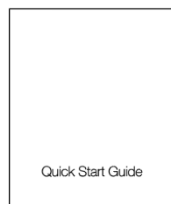
Pen Nibs



Pen Nib Clip



Mirco USB Cable



Quick Start Guide



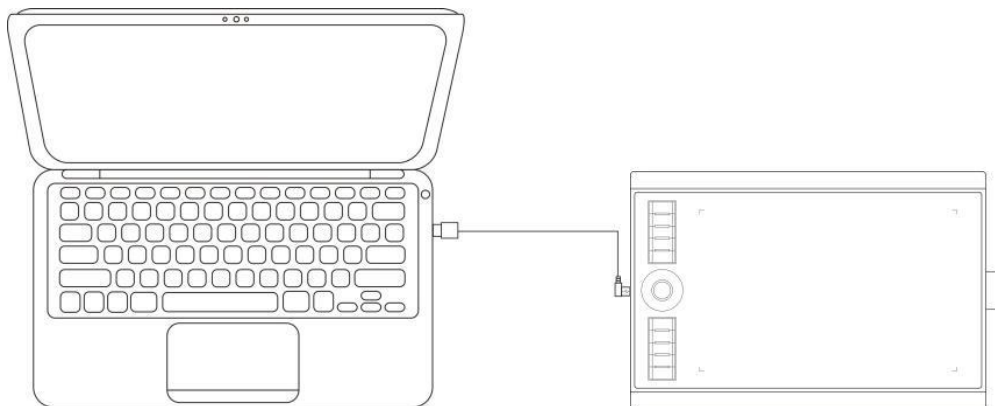
Pen Case



Felt Pouch for Nibs

1.3 Tablet Connection

Connect the tablet to your computer with USB cable.





1.4 Driver Installation

1.4.1 OS Support

Windows 7 or later, macOS 10.12 or later, Android 6.0 or later

1.4.2 Install Driver

Please download the driver from our website: www.gaomon.net/download

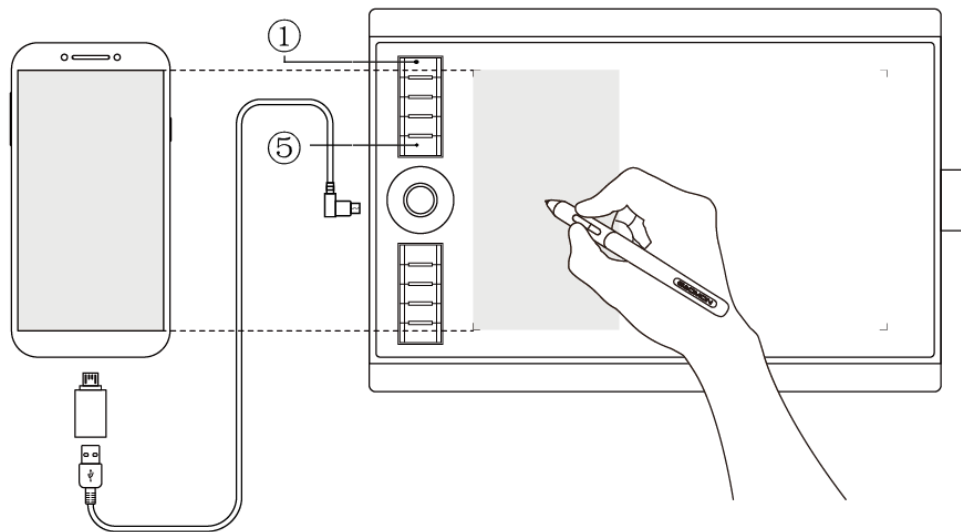
After finishing installation, you can find the driver icon  in the system tray area, which means the driver was installed successfully; when you connect the tablet to computer, the icon will change to color , which means the driver has already recognized the tablet and you can start using it now.

Notice:

1. Before installing, you need to uninstall other driver of similar products, including the old driver of GAOMON product.
2. Before installing, please close all graphics software and anti-virus software to avoid unnecessary mistake.

1.5 Connecting to Android Phone & Tablet

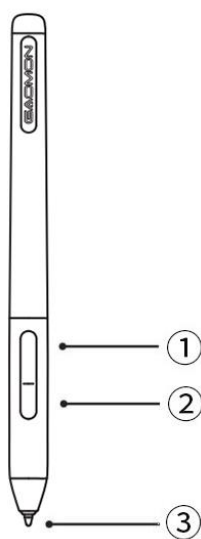
1. Please use Android phone/tablet in portrait mode.
2. Please make sure your phone/tablet OS is as following: Android OS 6.0 or later
3. For some models, you need to go phone or tablet "Settings" then enable "OTG" function.
4. Choose the right OTG Adapter from package, which depends on USB port type of your phone/tablet, then connect pen tablet to your phone following the illustrations below:



Notes:

1. The pen tablet can work without installing any driver into your phone/tablet.
2. Once connected, the tablet will automatically enter phone mode, in which the pen can only work in the left gray area(158.8x89.3mm).
3. If it fails to recognize the tablet as the phone mode, please press the button ①, ⑤ at the same time for 3 seconds to enter phone mode.

1.6 Digital Pen Overview



① : Upper button: Right mouse key function(default)

② : Lower button: Eraser function(default)

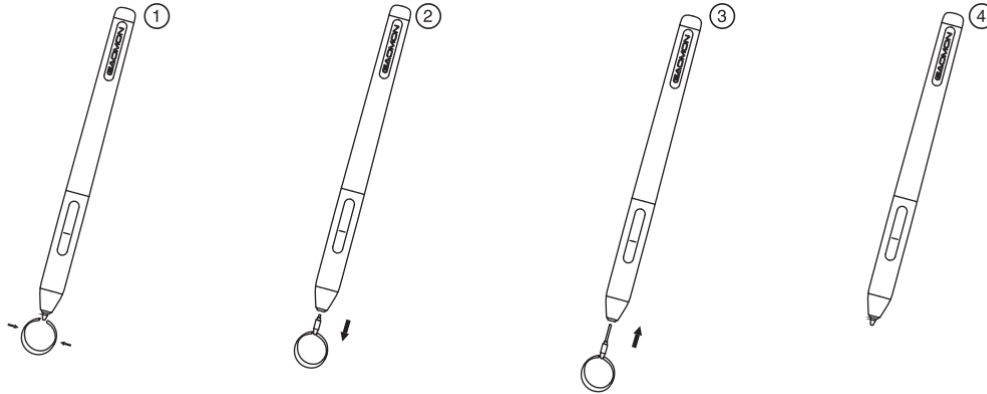
③ : Pen nib: Left mouse key function

1.7 Pen Nib Replacement

The nib will be wear off after using for a long time, then you need to replace a new nib.

1) Use the pen nib clip to pull the old nib straight out of the pen. (①②)

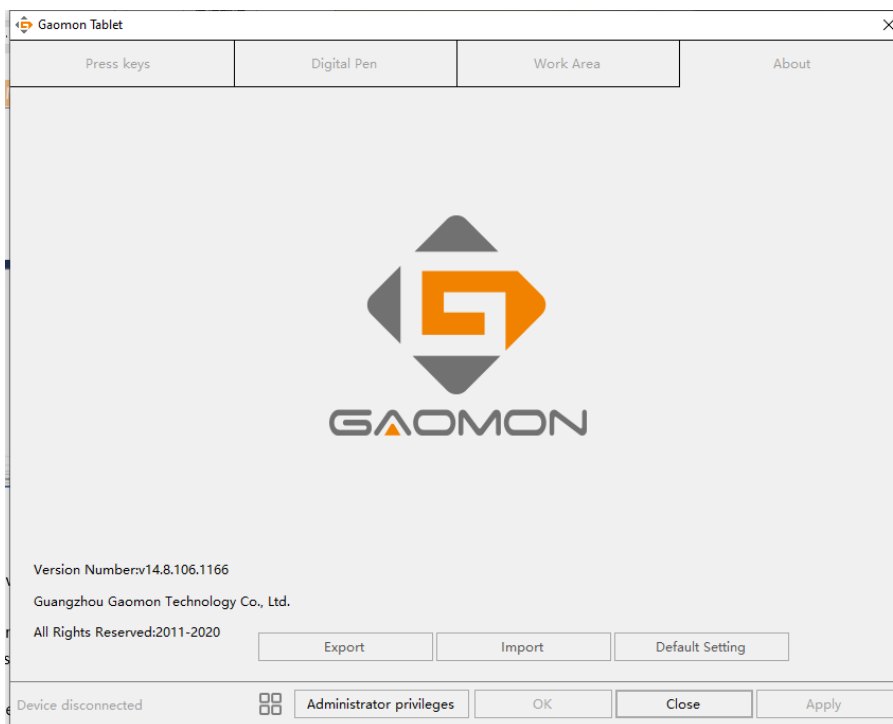
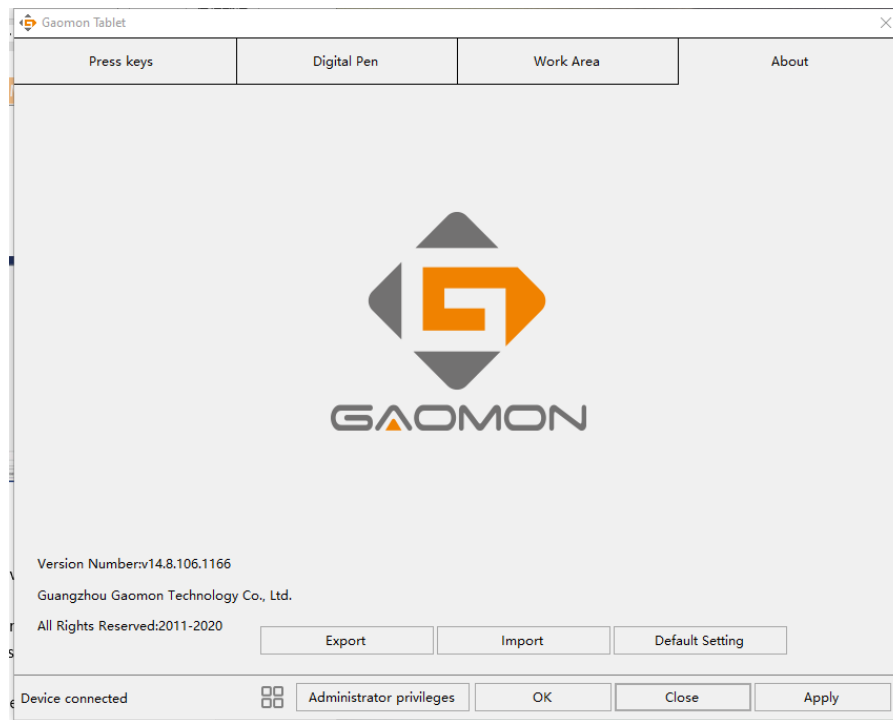
2) Insert a new pen nib into the stylus and push the nib until it stops. (③④)



2. Function Setting

2.1 Device Connection Prompt

1. Device disconnected: The computer does not recognize the tablet.
2. Device connected: The computer has recognized the tablet.



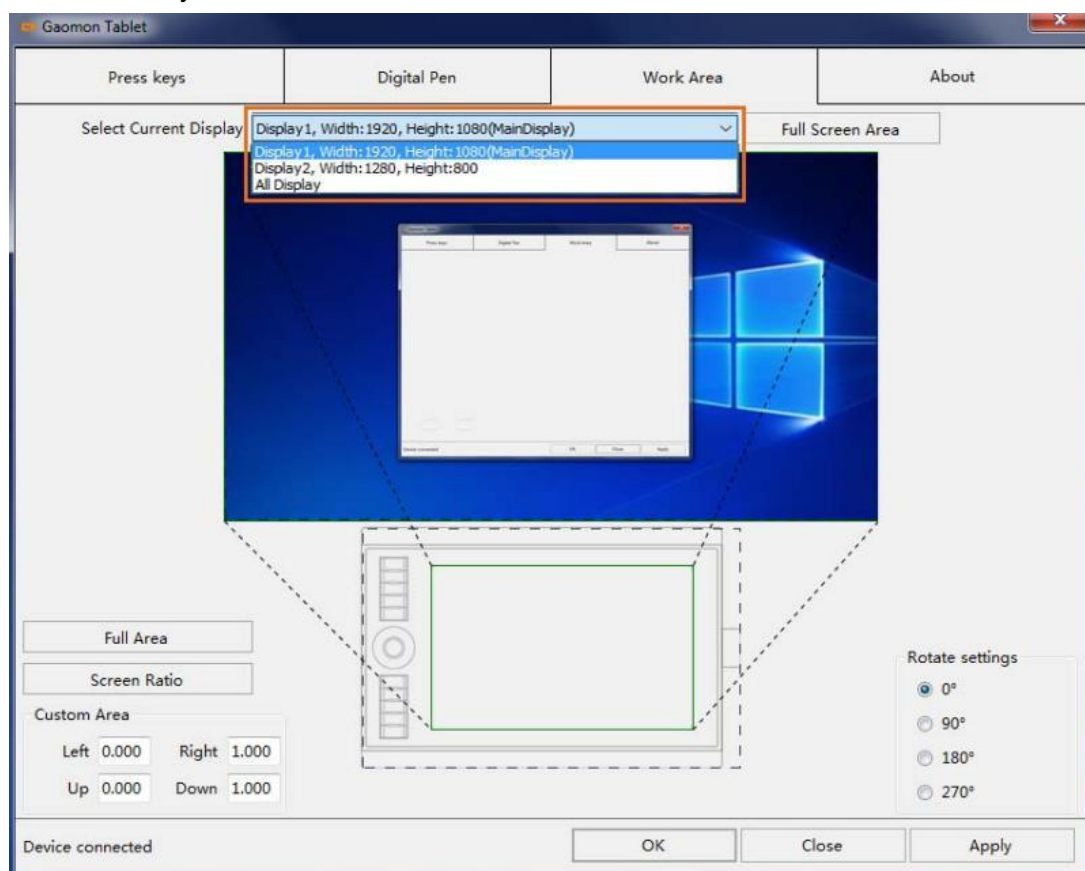
2.2 Working Area Setting

2.2.1 Using Multiple Monitors

Select the Working Area tab to define the relationship between pen movement on the tablet and cursor movement on the monitor screen.

By default the entire active area of tablet maps to the entire monitor. If more than one monitor is in use and you are in extended mode, you need to choose the related monitor on the driver interface which you are going to map to.

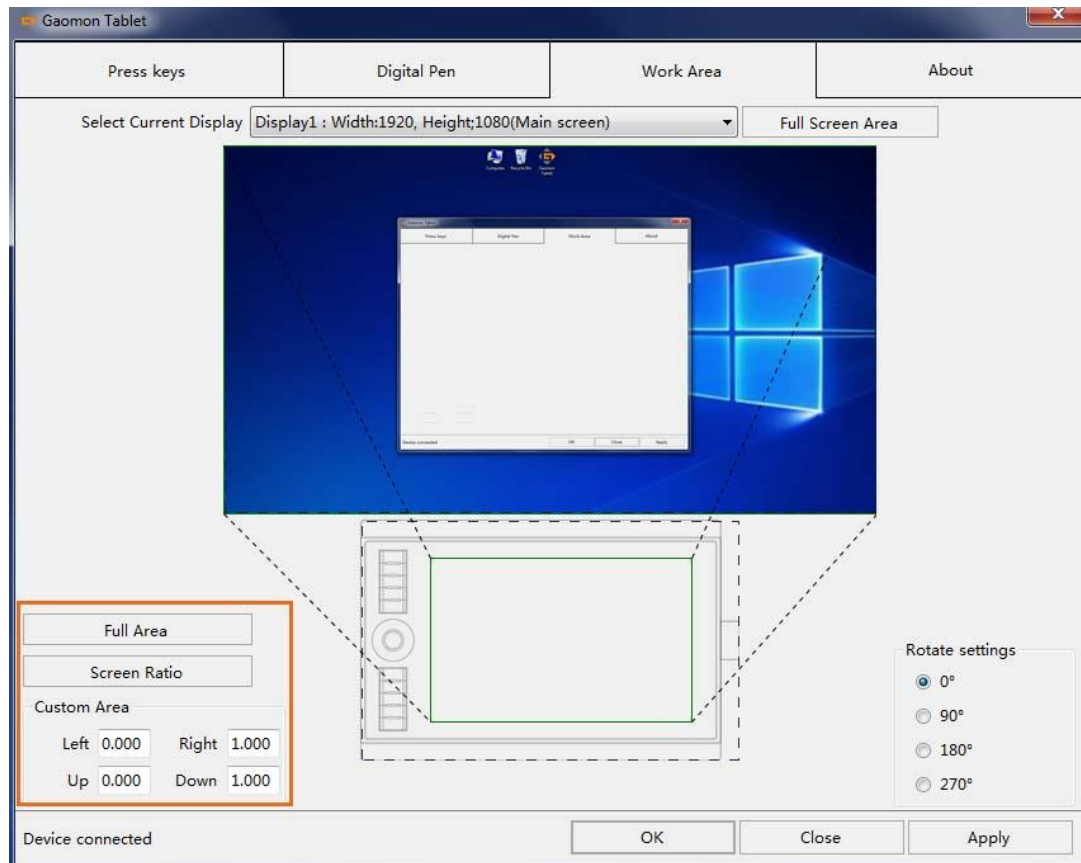
If your monitors are in mirror mode (All monitors display the same content), the tablet maps to the entire space on each monitor and the screen cursor is displayed on each monitor simultaneously.



2.2.2 Working Area Setting

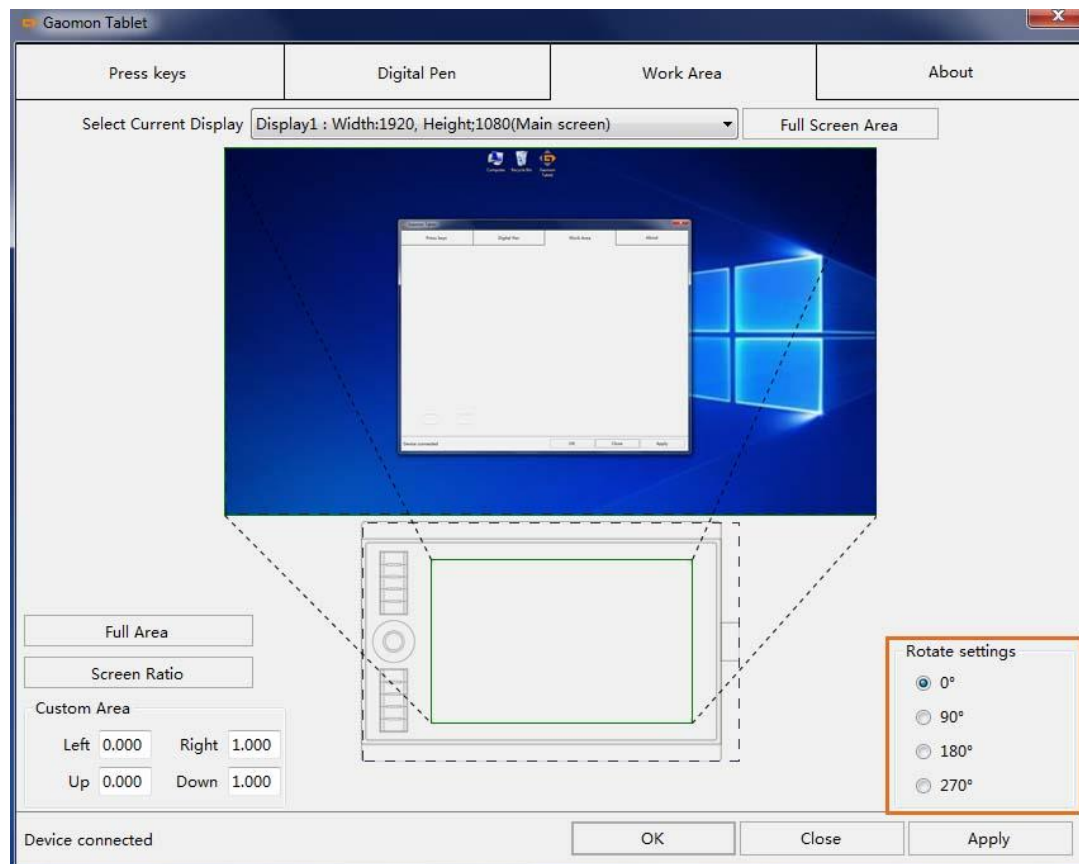
Define the tablet area that will be mapped to the screen area.

1. Full Area: the entire active area of the tablet. This is the default setting.
2. Custom Area: 1.> Enter coordinate values. Or 2.> Drag the corners of the foreground graphic to select the screen area.



2.2.3 Rotate Working Area

By changing the direction of the tablet to adapt to the left and right hand operation. We provide four directions of choice.

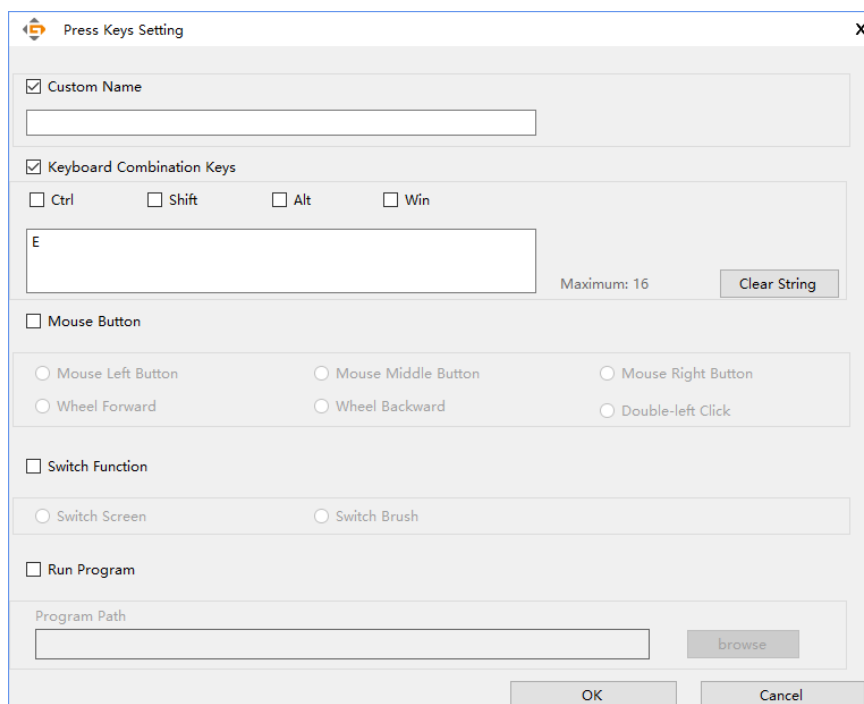
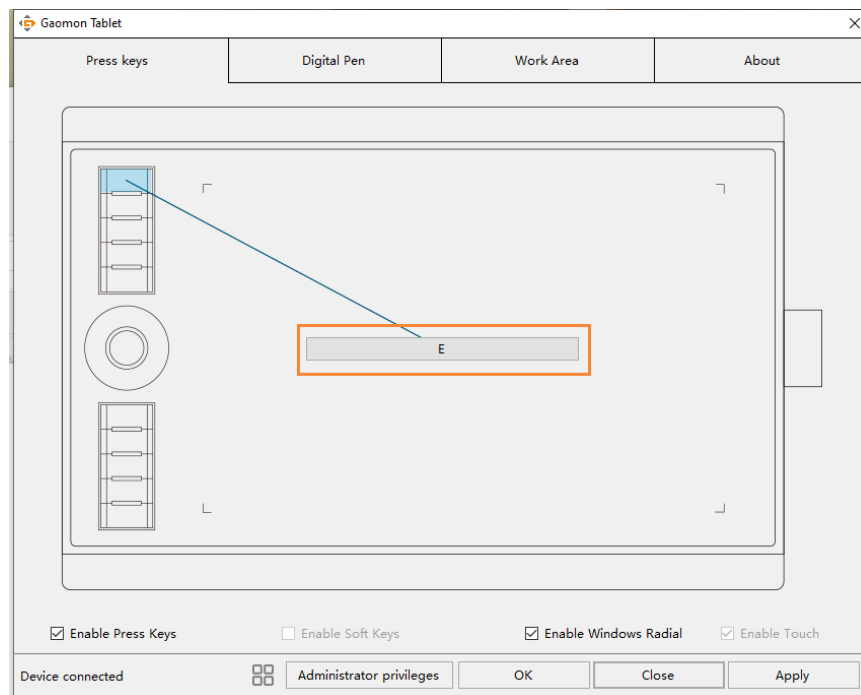


2.3 Shortcuts Keys Function Setting

Default Setting: Place the cursor on the shortcut key or click the press key to find the default values.

Customized Setting: Select the function to be achieved on the pop-up dialog box, then click APPLY or OK to take effect.

Enable/Disable Press Keys: Check/Uncheck "Enable Press Keys"

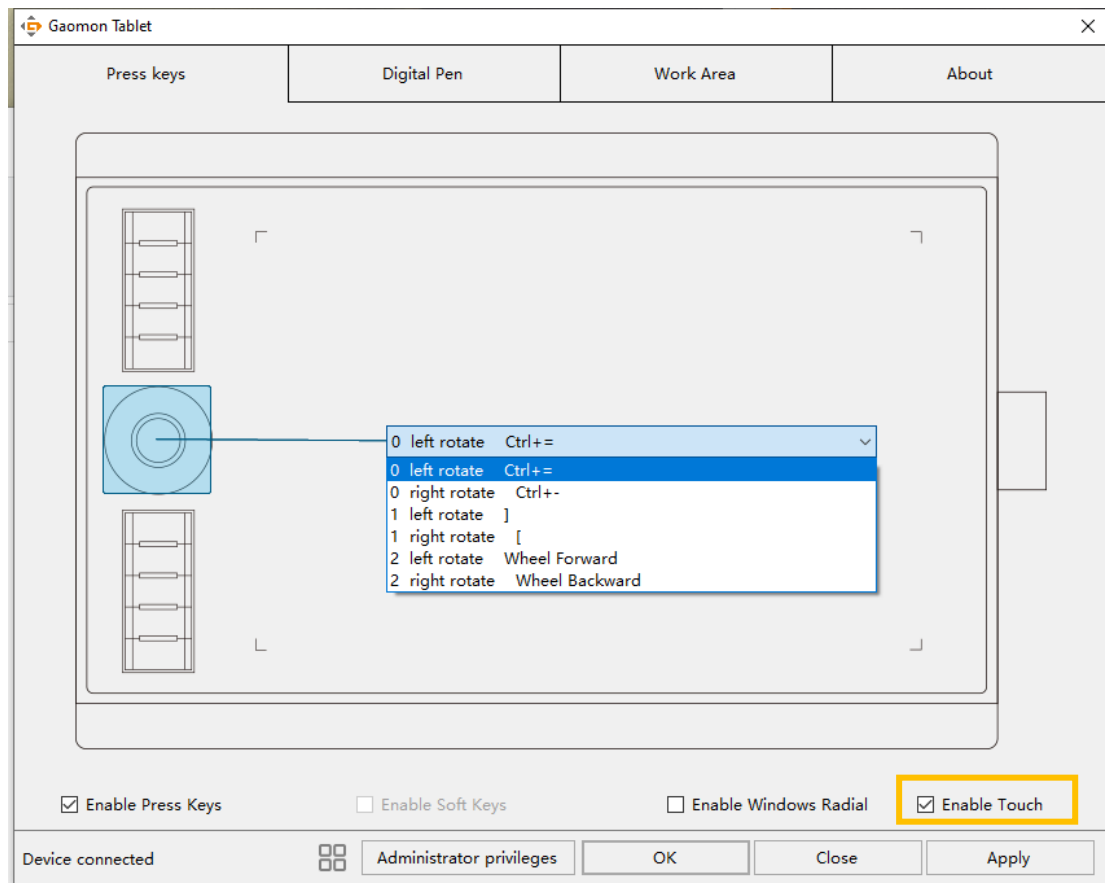


2.4 Ring/Windows Radial Function

2.4.1 Enable Touch mode:

Press the middle button and three groups of functions appear at the bottom of the screen, which can be switched by clicking the middle button.

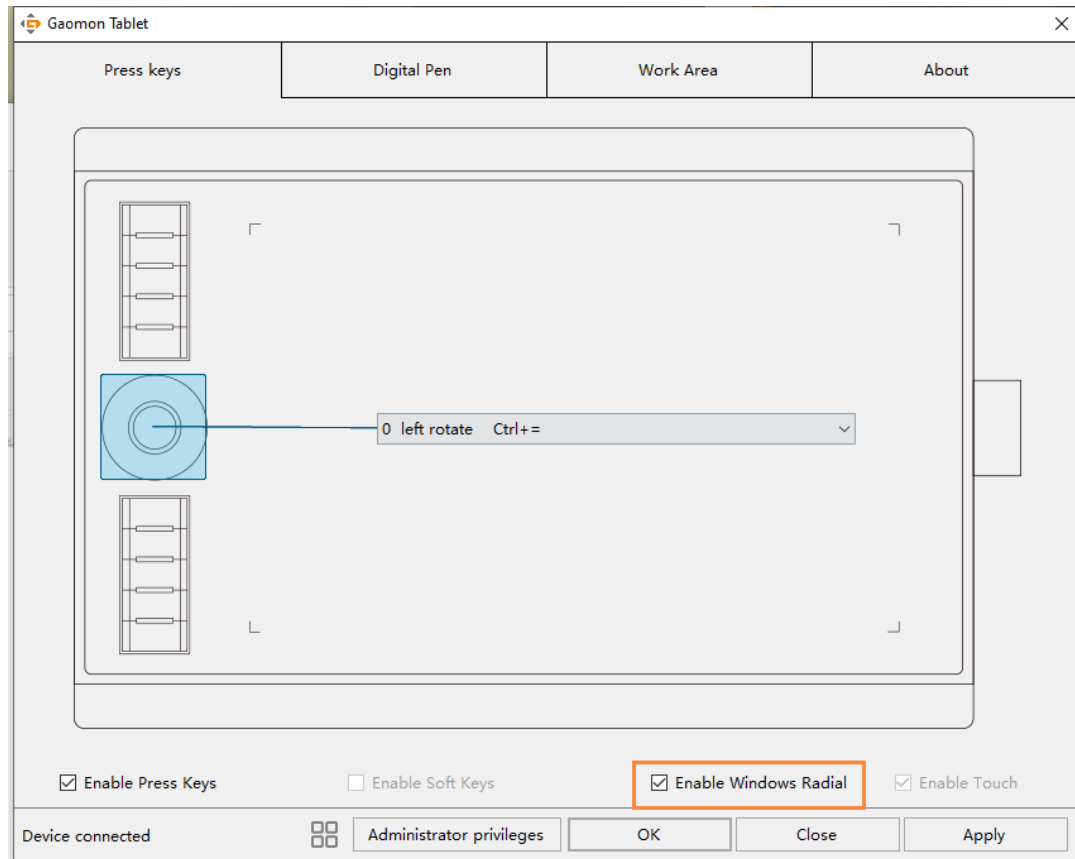
Default setting: Canvas Zoom in/out, Brush Zoom in/out , Scroll up/down



2.4.2 Windows Radial

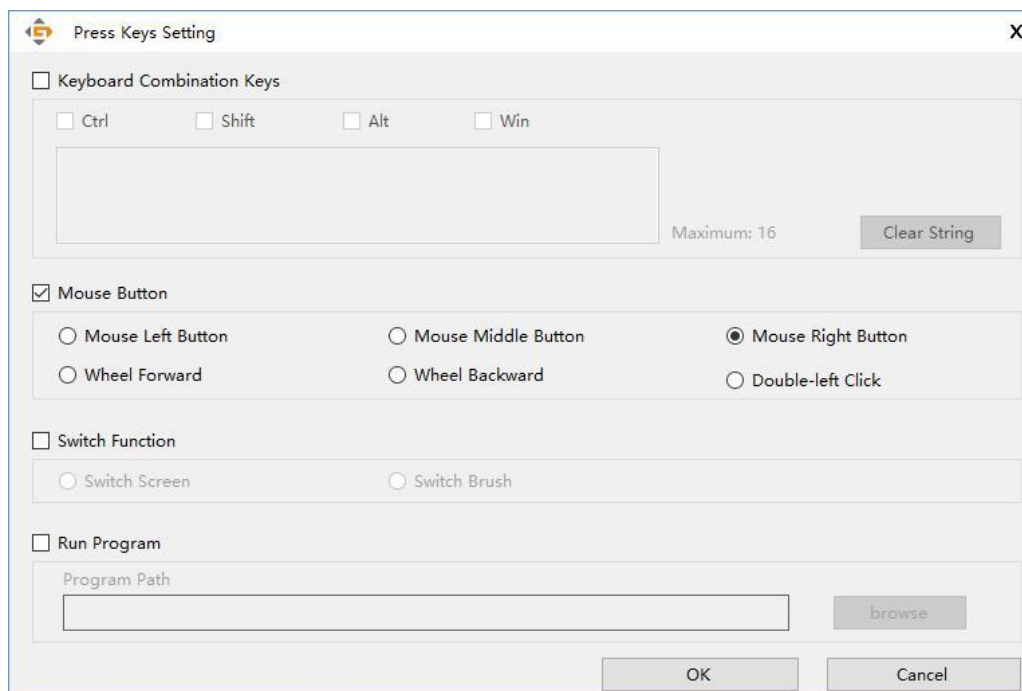
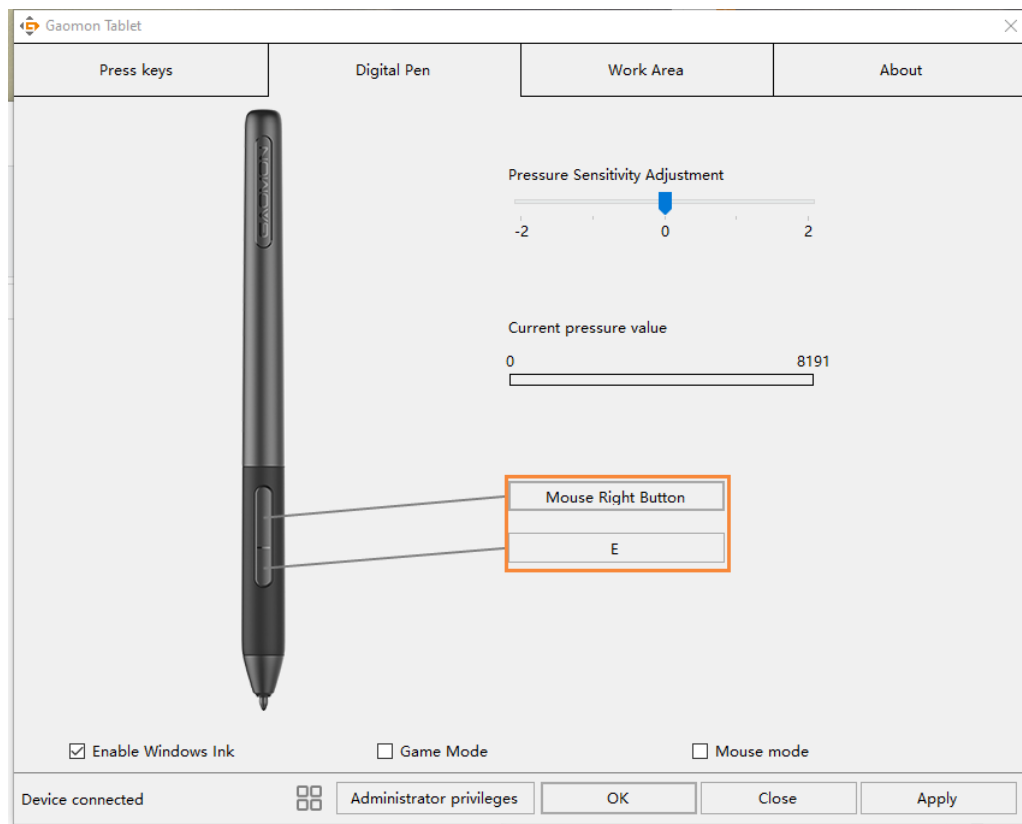
The Ring is compatible with Windows Radial Controller Protocol. Windows Radial features will be activated once you select “Enable Windows Radial” via the driver.

Long press the key on the centre of the Dial Controller to call up a tool menu, users can use Dial Controller to adjust the brush size, pick the color and scroll through the pages, etc.



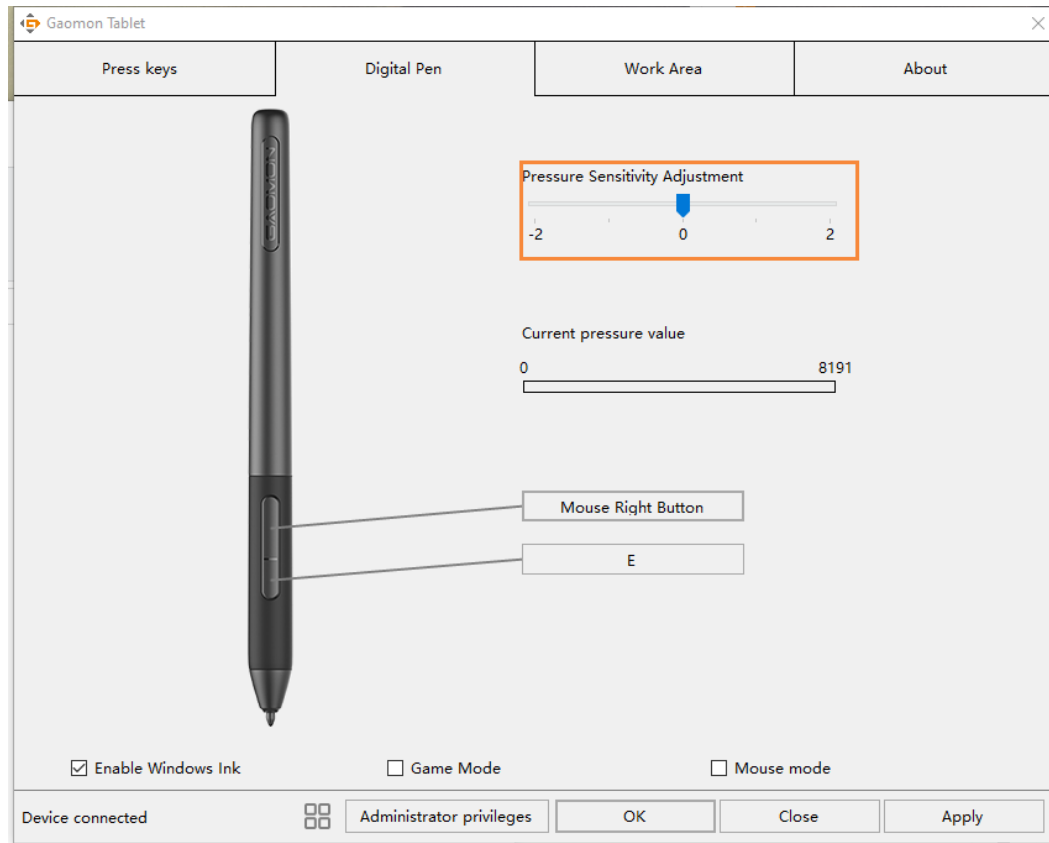
2.5 Pen Buttons Function Setting

Select the function to be achieved on the pop-up dialog box, then click APPLY or OK to take effect.



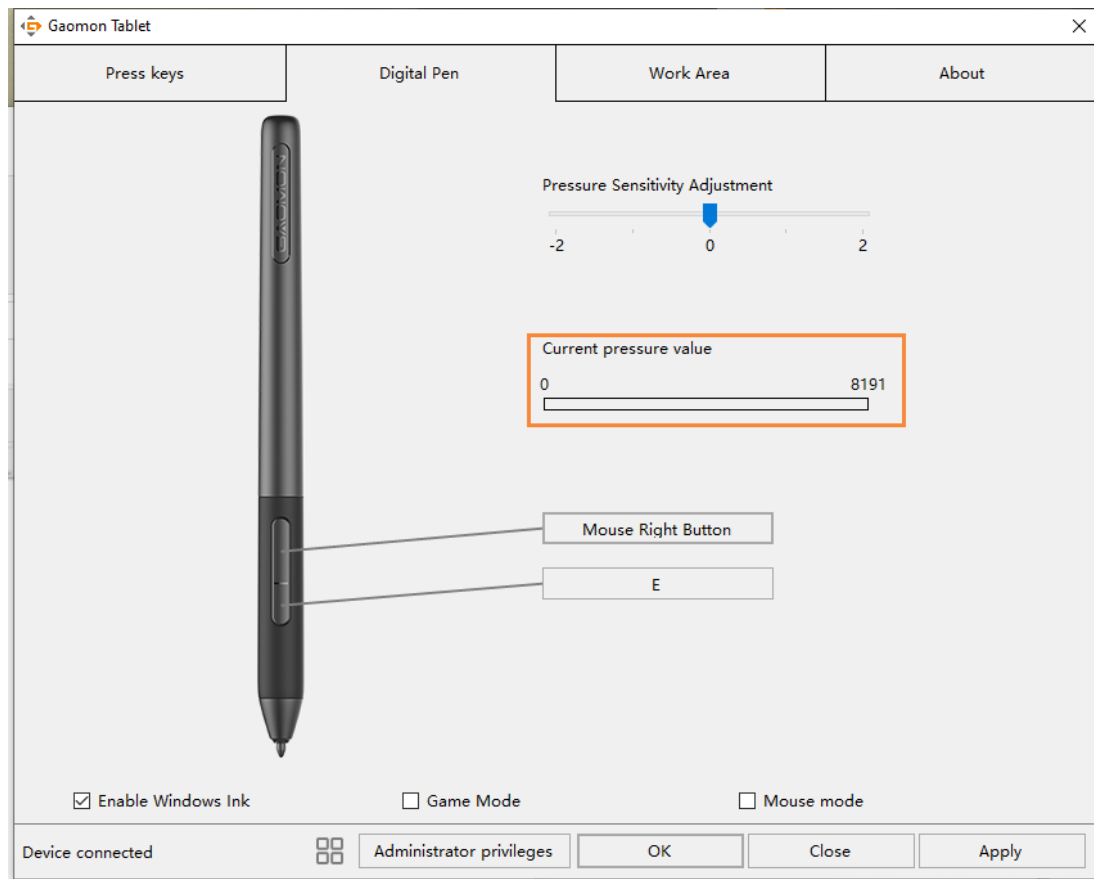
2.6 Pressure Sensitivity Setting

The pressure sensitivity will be changed by dragging the slider left or right, the smaller the value, the more the pressure sensitivity.



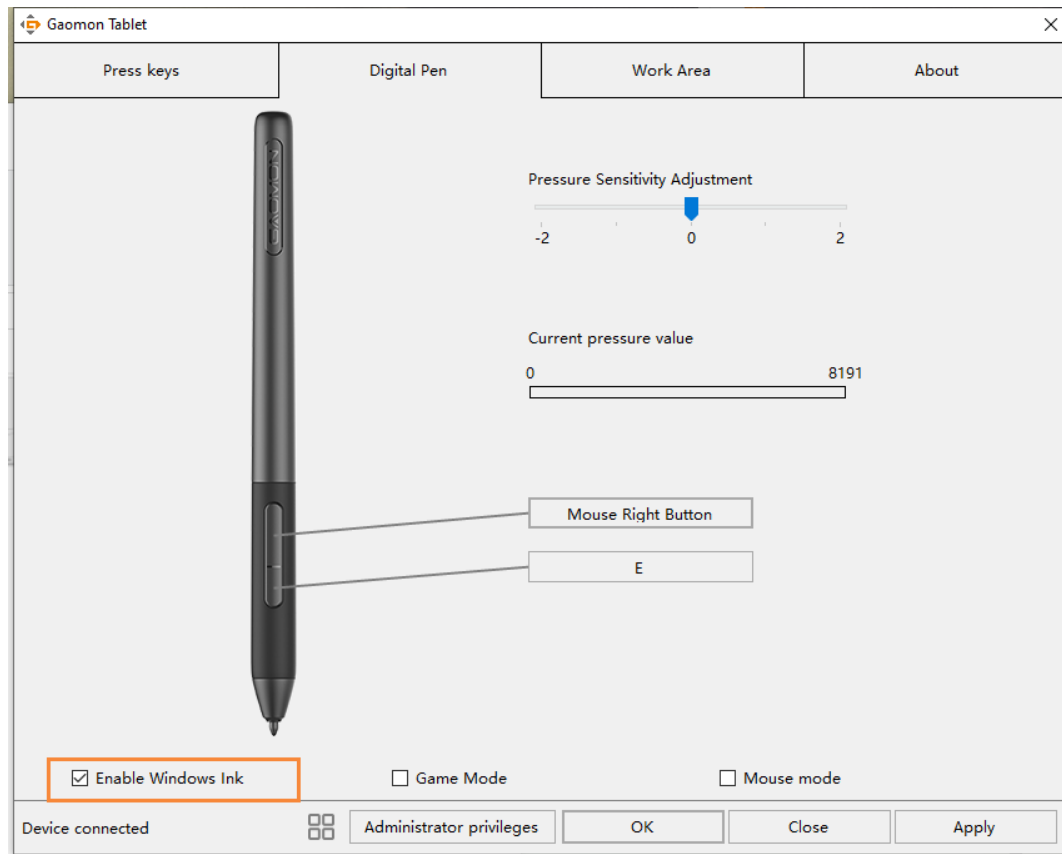
2.7 Pen Pressure Testing

You can gradually apply pressure to the stylus on the screen to test the pressure level.



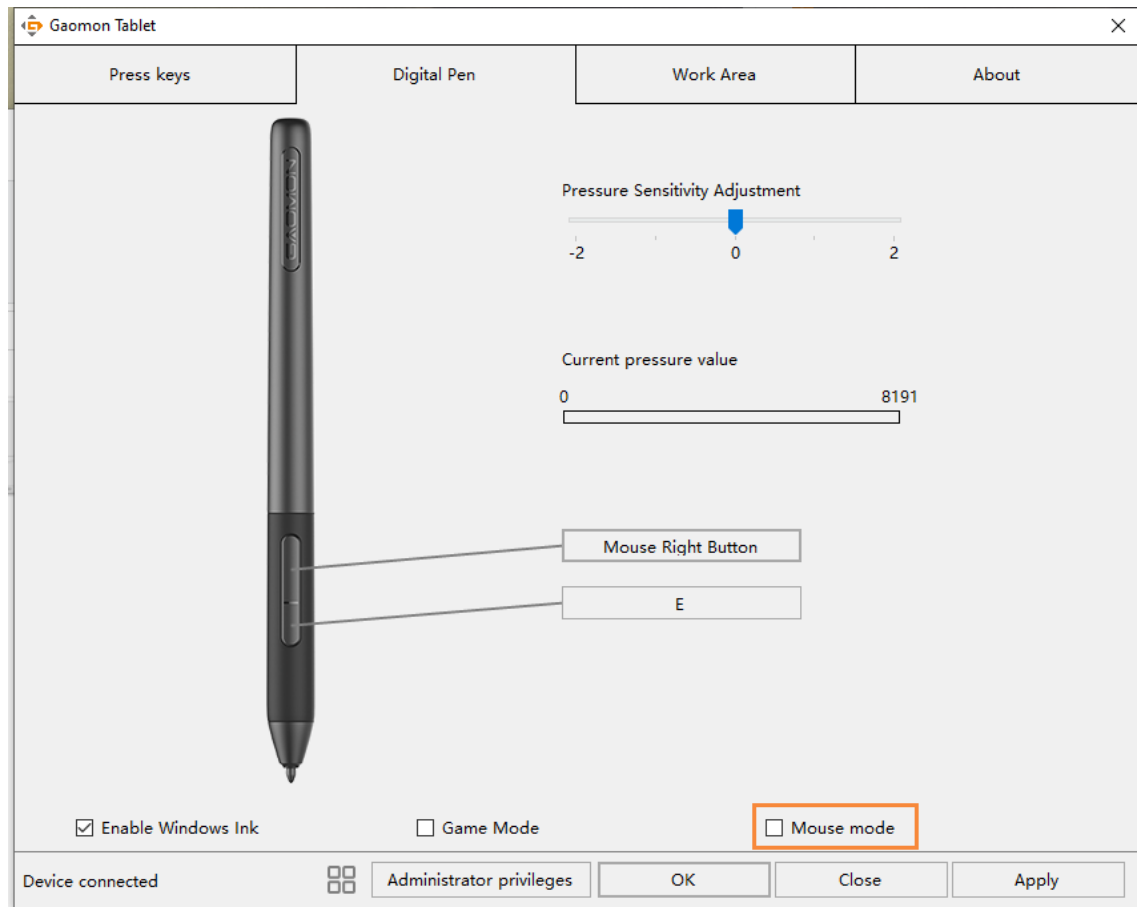
2.8 Enable the Windows Ink feature

Microsoft Windows provides extensive support for pen input. Pen features are supported in such as Microsoft Office、Windows Journal、Adobe Photoshop CC、SketchBook 6 and so on.



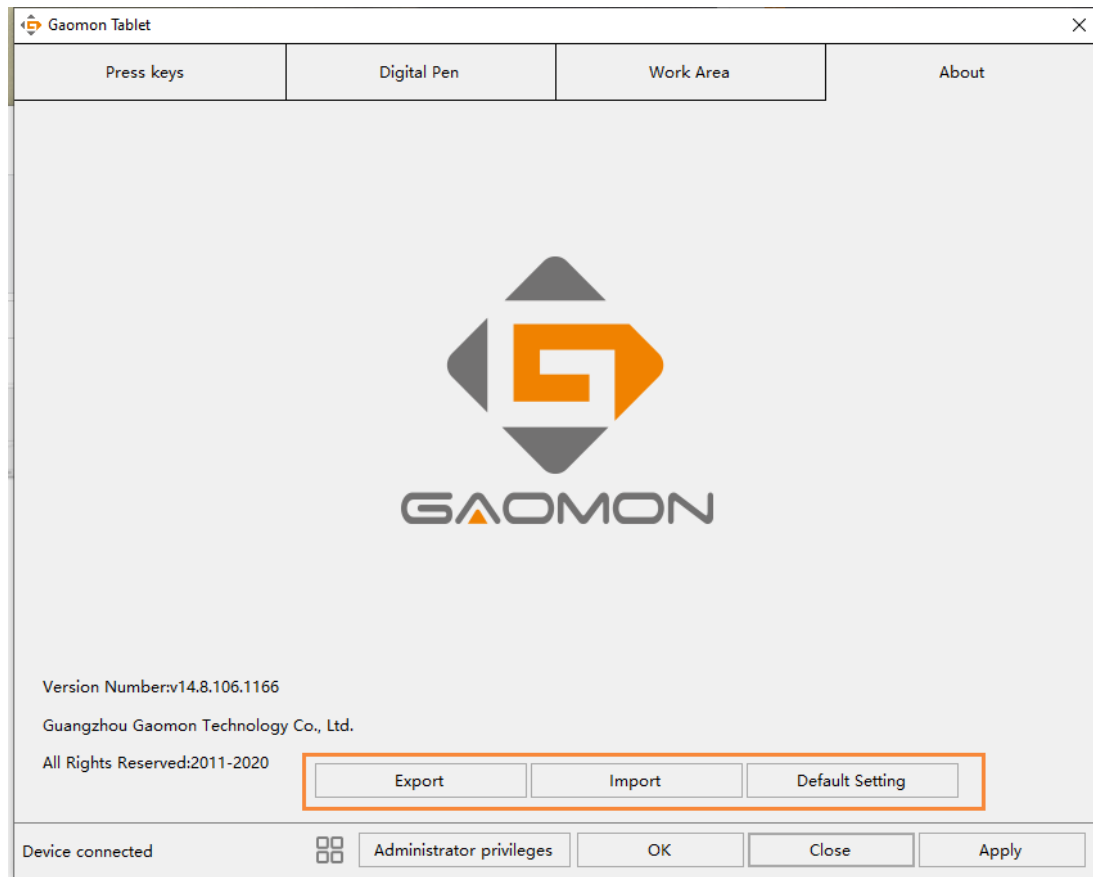
2.9 Mouse Mode

As shown below, check the checkbox in front of the mouse mode to open the mouse mode. Under mouse mode, when you move the pen, the cursor moves following the relative coordinate principle, similar to moving the cursor with the mouse. This means you can click icons or select options at the edge of the screen without moving the pen to the edge of the working area.



2.10 Data Export and Import

The driver supports exporting and importing your custom configuration data of the product, which is convenient for you to use different software and avoid the trouble of repeated settings.



3. Specifications

Model	M10K PRO
Touch Technology	Battery-free EMR
Working Area	255.06 x 159.84mm (10 x 6.25in)
Dimension	360 x 240 x 10.5 mm
Net Weight	695g
Touch Resolution	5080LPI
Report Rate	266PPS
Accuracy	±0.3mm
Pen Sensing Height	10mm
Interface	Micro USB
Express Key	10 Programmable Press Keys+1 Function Switch Key+1Ring
Radial	On
OS Support	Windows 7 or later, mac OS 10.12 or later, Andriod 6.0 or later
Model	AP32
Dimension	160 x Φ12mm
Weight	12g
Sensitivity Pressure	8192 Levels

4.Trouble Shooting

For more FAQ, please feel free check:


<https://blog.gaomon.net/faq-list/> or <https://www.gaomon.net/question/>


5.Contact Us for After-sale Service

GAOMON TECHNOLOGY CORPORATION

 www.facebook.com/Gaomonpentablet

 twitter.com/Gaomonpentablet

 service@gaomon.net

 <https://www.gaomon.net>