


User Manual

M10K

Battery-Free Graphic Tablet



- 
- Thank you for choosing and purchasing M10K, which is a **Battery-Free** graphics tablet. It does not contain any battery in the pen, which means you don't need to charge the pen when you use it.
 - To give you a better understanding and use of this product, please read this user manual carefully before using.
 - Compatibility: Microsoft Windows XP/7/8/10, Mac OS X 10.8 or later.
 - This product is compliant with the standards prescribed by the state.
 - This user manual only display the windows information, it will also apply to MAC OS unless otherwise specified.

© Copyright 2017 Gaomon Technology Corporation All Rights Reserved.

Contents

1. Introduction and Installing	4
1.1 Packing List	4
1.2 Product Overview	4
1.2.1 Front View	4
1.2.2 Rear View	5
1.2.3 Connect the tablet	5
1.2.4 ArtPaint AP30	6
1.2.5 Replace the pen nib	6
1.3 Tablet Driver Installing	7
1.3.1 OS Compatibility	7
1.3.2 Tablet Driver Installing	7
2. Setup and Operation Guide	7
2.1 Mapping	7
2.2 Pen Setting	8
2.3 Key Setting	10
3. Troubleshooting	11
4. Product Specifications	12

1. Introduction and Installing

1.1 Packing List

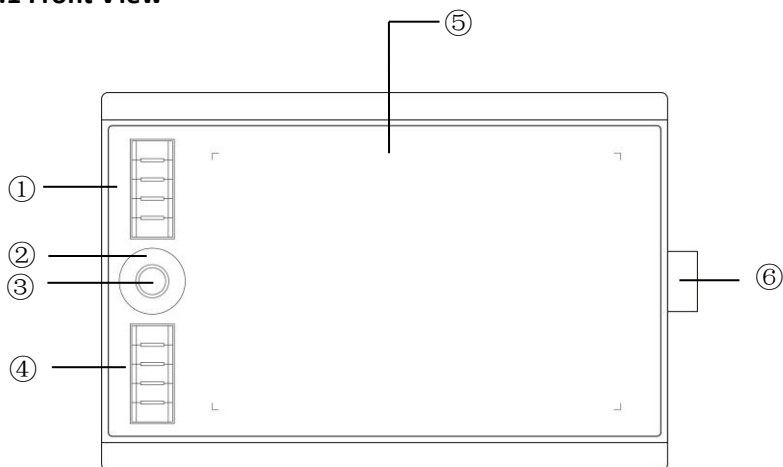
After unpacking, make sure that all of the following contents are included:

- Graphics Tablet
- Stylus Pen
- Pen Nibs
- Pen Nib Clip
- Micro USB Cable
- Quick Start Guide
- Installation CD

If there is a defect or missing part, please contact the agency where you purchased the product.

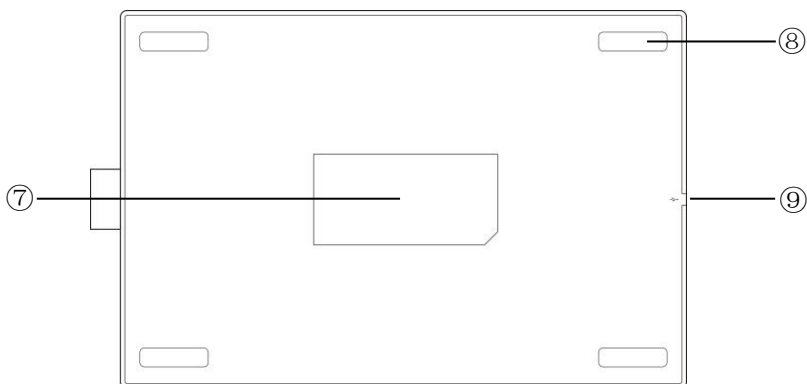
1.2 Product Overview

1.2.1 Front View



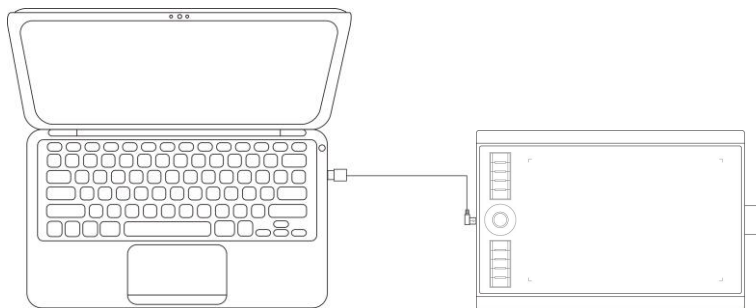
- ①④ Express Key: Can be self-defined in the driver.
- ② Touch Ring: Zoom or Scroll ③ Driver Setting (Windows)
- ⑤ Working Area ⑥ Pen Jacket

1.2.2 Rear View

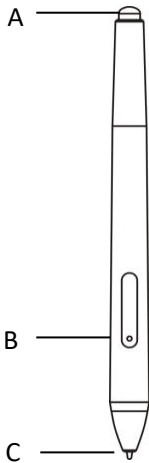


- ⑦ Name Plate
- ⑧ Anti-slip Mat
- ⑨ Micro USB Port: Connect the tablet to your computer with Micro USB cable. (As shown below)

1.2.3 Connect the tablet



1.2.4 ArtPaint AP30



A: Top Button: Eraser Function

B: Side Button: Mouse Right Key Function.

C: Pen Nib: Mouse Left Key function

1.2.5 Replace the pen nib

When the nib gets too short or develops a sharp edge, you can replace it with one of the spare nibs that comes with the pen.

1) Use the pen nib clip to pull the old nib straight out of the pen.



2) Insert a new pen nib into the stylus pen and push the nib until it stops.

1.3 Tablet Driver Installing

1.3.1 OS Compatibility

- 1) Before installing the Tablet, make sure your PC Operation System (OS) is Windows XP/ 7 / 8 / 10 and MAC 10.8 or later

1.3.2 Tablet Driver Installing

- 1) Connect the tablet to your computer.
- 2) Insert the Driver CD into the CD-ROM; Open the “Driver” folder.
If you don't have a CD drive, please download the driver from our website: www.gaomon.net
- 3) Then execute “ setup” and follow the instruction to finish the installation.
- 4) After complete the installation, please reboot your computer.

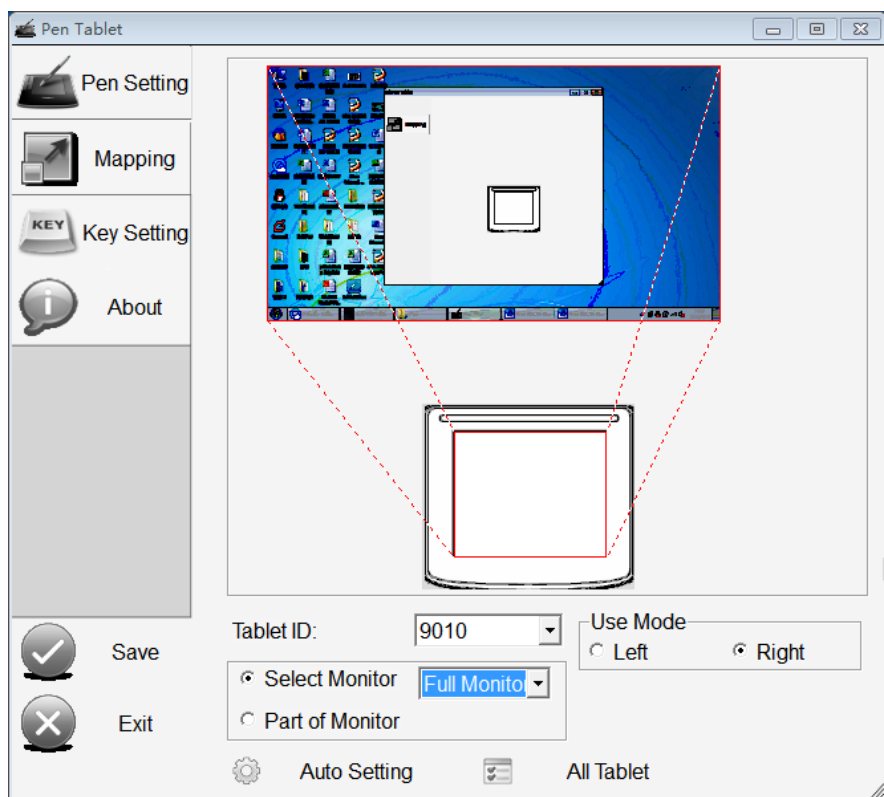
2. Setup and Operation Guide

2.1 Mapping

1) Select the Mapping tab to define the relationship between pen movement on the tablet surface and cursor movement on the monitor screen. When you select the Mapping tab, you will see a graphic of your pen tablet and monitor(s), and mapping controls. By default the entire active area of the tablet maps to the entire monitor. If more than one monitor is in use the tablet will map to all monitors. Images dynamically update to illustrate the selected mapping relationship.


2) Use Mode

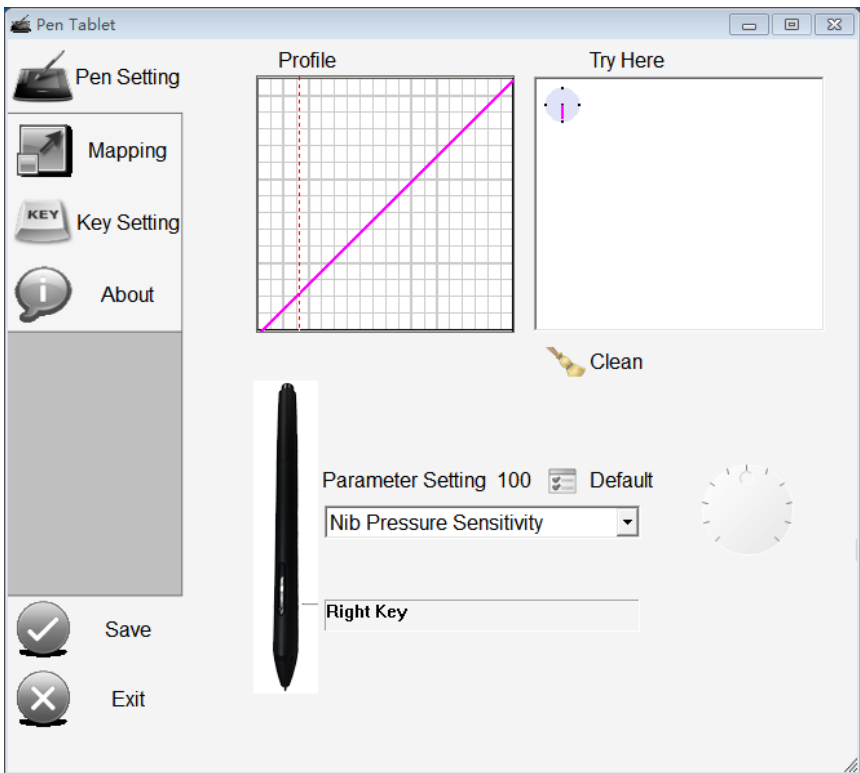
Choose “Left” or “Right” mode according to your using habit.



2.2 Pen Setting

In addition to the function of handwriting (and drawing) stylus, it is equivalent to the role of the mouse, for default setting the side key is equivalent of right-key of mouse, if you need personalization setting, please refer following guide

- 1) Click the **Pen Setting** icon ( **Pen Setting**);
- 2) Then you can adjust the sensitivity and define the lower key function

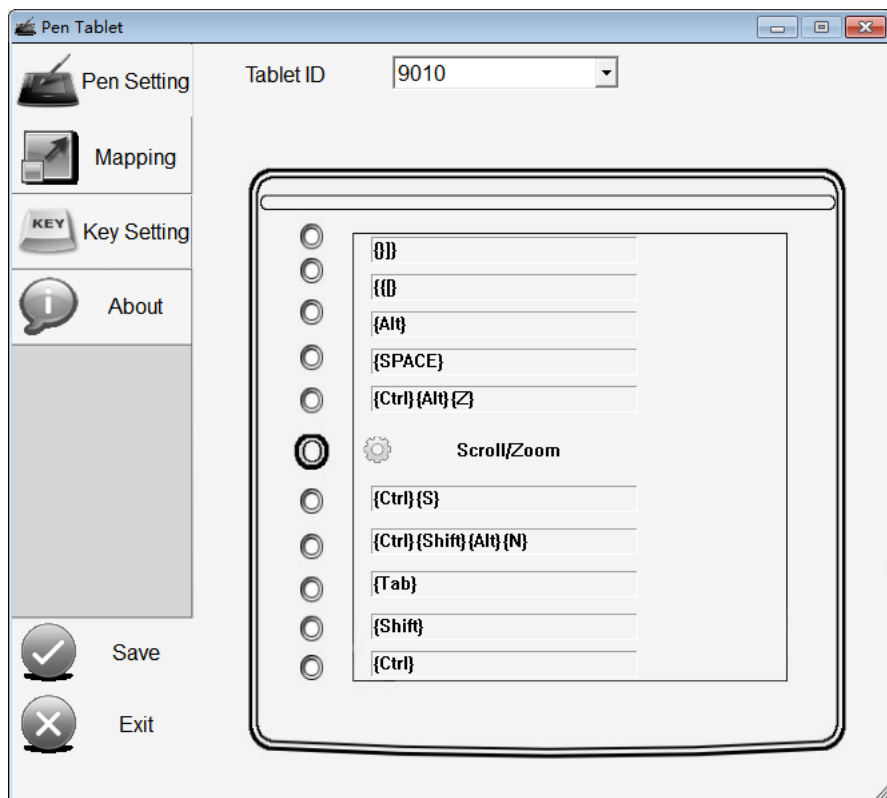


The pen support 2048 levels pressure. To draw with pressure, select a pressure-sensitive tool from your application's tool palette, when you press your pen nib lightly, it will show softer color or thin lines, and press harder for dense color or thick lines.

Note: Hold this pen the way you would hold a normal pen or pencil while writing on paper and the allowed pen input angle is 45° in any direction from a position.

2.3 Key Setting

- 1) Click “Key Setting” icon
- 2) Click the function bar on the right side to select the preferred settings which you need to define the press key. Then Click “Save” .



3. Troubleshooting

If you encounter problems with the tablet, please refer to the following tables.

Problems	Suggested action
The pen is no function	<ul style="list-style-type: none">* Make sure you have installed the driver correctly.* Make sure the driver is running.* Try using mouse to double check, if mouse also no function, please restarting your computer or your application.*Try to reconnect the USB cable.* Try to reinstall the USB Tablet driver.
Pen nib is too short	<ul style="list-style-type: none">* Check whether the pen nib is too short. If yes, replace the pen nib.
The cursor move Incorrectly	<ul style="list-style-type: none">* Eliminate interference from nearby electrical devices.* Try restarting your computer for double check.
The side switch does not work	<ul style="list-style-type: none">* Be sure that when you press the side button, the pen nib is within 10mm of the tablet surface and your pen nib is not against the tablet surface.* Be sure that the side button is set to the proper function you are expecting to occur for the application.

4. Product Specifications

TABLET	
Model	M10K
Touch Technology	Passive Cordless EMR
Working Area	255.06 x 159.84mm
Dimension	360 x 240 x 12.5 mm
Net Weight	695g
Touch Resolution	5080LPI
Report Rate	250pps
Pen Sensing Height	10mm
Interface	Micro USB
Express Key	11 +Touch Ring
OS Support	Windows XP/ 7/ 8/ 10, MAC 10.8 or later
PEN	
Model	ArtPaint AP30
Dimension	151.6 x12.71mm
Weight	15g
Pressure	2048 Levels

Note: Specification may be subject to change without prior notice.